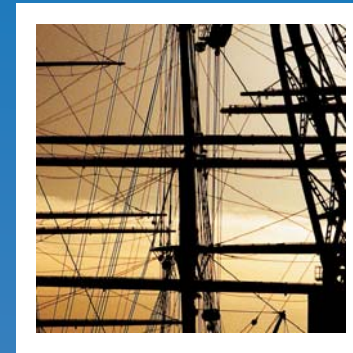


# Marina



Location : Hulhumale



**Foreign Investment Services Bureau**

Foreign Investment Services Bureau  
Ministry of Economic Development and Trade  
First Floor, Ghaazee Building,  
Malé, Maldives.

Phone: (960) 3328754 Fax: (960) 3323756

Website: [www.investmaldives.org](http://www.investmaldives.org)

E-mail: [info@investmaldives.org](mailto:info@investmaldives.org)

Features : Anchorage for 76 vessels  
commercial activities such as restaurants and  
cafés  
Service facilities such as fuel, water ... etc  
Opportunity to cater for the lack of Marina  
facilities in the greater Male' region

Urban design guidelines : Plot Area (sq.m.): 2,416  
Footprint (sq.m): 1,820  
Plot ratio: 8.3  
Site coverage: 0.75  
Max GFA (Sq.m): 20,050

Max - height : Low-rise commercial

Business Model : Long-term lease or JV with HDC

Time frame : 1 to 3 years